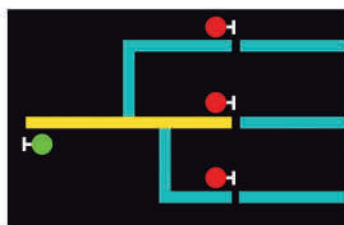




SIMAS S.P.A. ELKROM DIVISION



**RAILWAY
AUTOMATION
SYSTEMS**



INTEGRATED SOLUTION IN RAILWAY AUTOMATION

The use of cutting-edge technologies and a wide range of application fields, which characterizes today's rail transport, requires integrated and structured solutions.

Elkrom, the Railway Automation Division of **SIMAS S.p.A.**, is able to supply specific request in the **Transportation Solutions** area thanks to its considerable experience in the field.

Elkrom's expertise covers engineering, software development, integration, installation, commissioning and maintenance.

Continuous improvement and development of expertise both in systems and specific applications are the foundation stone on which **Elkrom's** projects and customer support are built.



SOME OF OUR PROJECTS

GE TRANSPORTATION

now ALSTOM

Design and delivery of the following systems:

- Montale
- Sommariva Bosco
- Quadrivio Zapata
- Madonnelle Botteghelle
- Andora
- S. Vittoria
- Airasca
- Sangone
- Castelrosso
- Bivio Settimo
- Crocetta
- Meana
- Piscina
- Statuto
- Garessio
- Rivalta Scrivia
- Pronda
- Remote Control System for the following stations in Italy
- Remote control and Indication management, automatic and manual command management, Mimic panel, automatic traffic management for the **Ferrovie del Sud Est** (Regional Railway in Italy)
- Remote control and Indication management, automatic and manual command management, Mimic panel, automatic traffic management for the **Ferrovie del Gargano** (Regional Railway in Italy)
- Software development and integration of specific functions
- Automatic Train Supervision (ATS) for the **Stockholm Tramway**

TSF

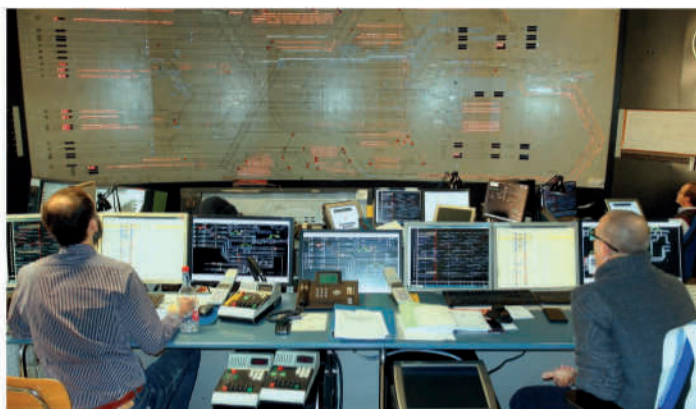
now ALMAVIVA

- Software development and integration of remote control and Indication management for the **Milan Central station**.

Indication	Command	Main Routes	Managed Processing Cycle	Object per Cycle
3000	200	1884	500 ms	15,000

Functions managed for each route

Route status management
Feasibility check
Route trouble check and diagnostic
System diagnostic
Command management



HITACHI RAIL

former ANSALDO STS

Aarhus Light Rail

- From design to commissioning of the Automatic Train Supervision System for the Aarhus (Denmark) Light Rail Transit Project (Odder - Aarhus - Grenaa)

Five Italian railway lines

- Data modelling and synoptic design based on Hitachi development tools for five Italian railway lines:

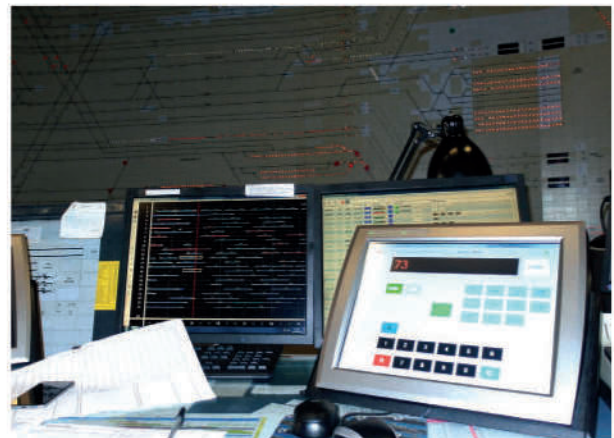
Fornovo - Berceto railway
Cremona railway node
Parma - San Zeno railway
Tirrenica Sud railway
Rome Metro, B line

Indication	Command	Station managed	Stops managed	Total line length
2300	880	17+1 (Depot)	33	110 km

Line length	
Simple track 96 Km	
Double track 14 Km	
Depot with 18 tracks	

Milan Central Station

- Hardware and software upgrade of remote control and Indication management system
- Software design and development of functional keyboards for the route command management
- Commissioning of new touchscreen keyboards



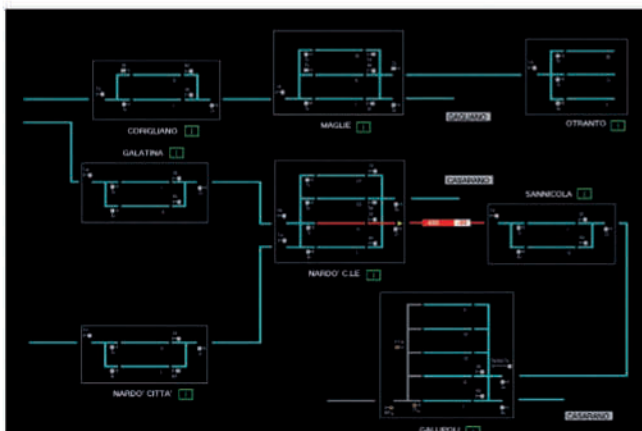
Output relay	Shunting routes managed	New keyboards commissioned
1700	2100	9

Our services offers

- Design of traffic management systems for railway lines, tramway lines and underground lines
- Development, testing, installation, maintenance and management of software for railway and tramway automation systems
- Training of operators and maintenance personnel for railway and tramway traffic control systems
- Customer service and system maintenance for traffic control systems
- Technical consulting for railway and tramway traffic management systems
- Drafting of feasibility studies and specifications for railway signaling systems

OUR PRODUCTS

- Automatic Train Supervision (ATS) for the Italian Railway Network (RFI) and Regional Railway
- Remote control of railway stations for the Italian Railway Network (RFI) and Regional Railway
- Automatic Train Supervision (ATS) for metro, tramway and light rail for towns in Italy and abroad
- Railway traffic management and control for rail, tramway and light rail systems
- Remote control system for railway stations
- Traffic simulator system
- Archiving and play-back management
- Time table management



ALLIED GROUP IN THE WORLD



ALLIED GROUP

The fitting choice worldwide

SIMAS S.P.A. ELKROM DIVISION

Operational headquarters

Via Renata Bianchi, 23/4 – 16152 Genova, Italy
Tel. + 39 010 6143704 - info@elkrom.com – www.elkrom.com

Registered office

Via Luigi Bassi, 8 – 26865 San Rocco al Porto, Lodi, Italy



SIMAS S.p.A Elkrom Division is part of Allied International Group



Scan the QR code with your smartphone to visit our website